

Main Goal

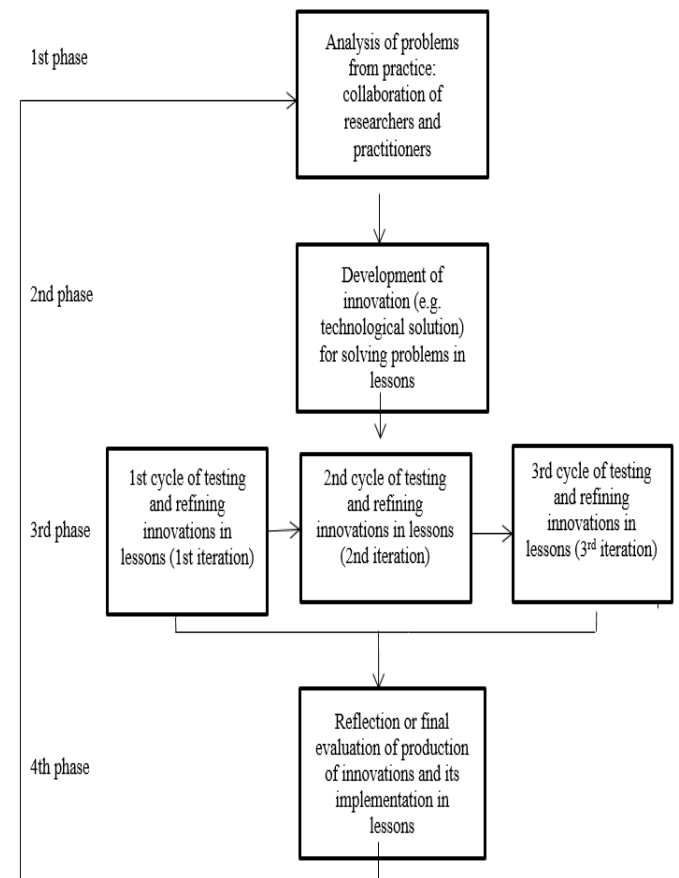
SEDELA is a **multidisciplinary** project aimed to design, develop, experiment and evaluate an improved model of **Self-Regulated Learning Process**, supported by **Semantic Open Learner Models**, **Trusted collaborative services** and an **experimental infrastructure**.

Self-Regulated Learning Process Development

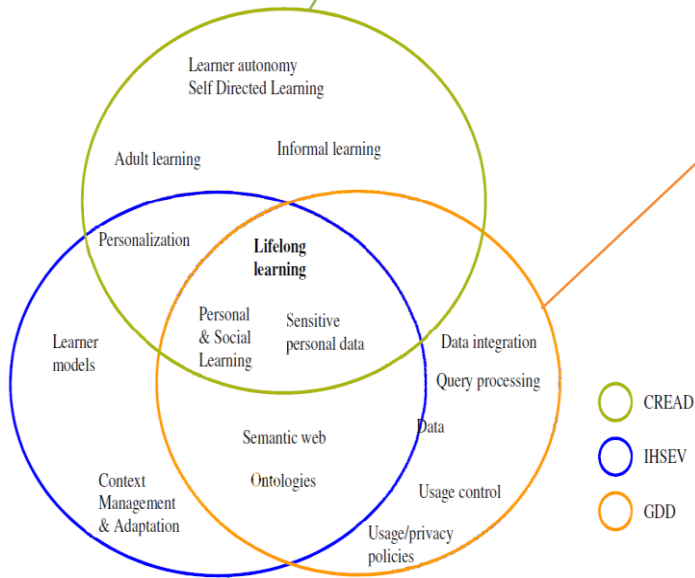
Ability to take charge in one's learning" (Holec, 1981) :

- determining the objectives;
- defining the contents and progressions;
- selecting methods and techniques to be used;
- monitoring the procedure of acquisition properly speaking (rhythm, time, place, etc.);
- evaluating what has been acquired.

Approach: Designed-based Research



Research Issues and Interactions



Trusted Collaborative Services

Data are heterogeneous and sensitive. Data integration handles heterogeneity problems. Integration techniques use the **Semantic Open Learner** models for virtual integration. Explicit policies enforce **usage control** during data integration.

Experimental Infrastructure

A personal server **Cozy** will host user's services to collect and manipulate **personal data**. Personal data are collected from different data sources. Users are the owner of their data. They keep **strict control** on the accesses to their Cozy.

Semantic Open Learner Models

Constructed from observation of interaction between a learner and a technology-enhanced learning system. « **Learner models reveal knowledge, difficulties and misconceptions of the individual** » (Bull, 2004).

Publications

[1] El Mawas, N. *et al. Towards a Self-Regulated Learning in a Lifelong Learning Perspective*. 9th International Conference on Computer Supported Education, 2017.

[2] Kiffer, S. *et al. Implement a Lifelong Learning Approach to Enhance Learner's Autonomy Skills within an Apprenticeship Program in Higher Education*. EARLI SIG 14 Interaction, learning and professional development, 2018.



SEDELA Website : <https://sedela.cominlabs.u-bretagne Loire.fr/>